

## Introducing the VISON Commercial Facility

Cuisine and culture are the pride of Japan, and the extensive commercial facility VISON is home to both. On a site 24 times the size of Tokyo Dome—that's over a million square meters in total—in addition to hotel accommodation, around 70 stores provide a variety of goods and services. Enjoy immersing yourself in the VISON experience by staying at HOTEL VISON and Hatago VISON.



### 1 Marche VISON

Ryuji Teshima, a chef whose restaurant was awarded a star in the Michelin Guide Paris, is supervisor of the Marche VISON farmers' market. The market features a wide range of produce from Mie Prefecture, including delicacies from both the land and the sea, like Matsusaka beef, Japanese spiny lobster, and abalone. Other highlights include Amagoya, run by the ama, female divers, who dive for shellfish, seaweed, and so on, and a specialist barbecue store.



### 2 Sweets Village

Sweets Village is produced by the pâtissier Hironobu Tsujiguchi. In addition to a patisserie and bakery, Sweets Village has Cacao House and Strawberry House, where research is undertaken into methods of cultivation for cacao and strawberries. Visitors can enjoy stores brimming with delicious foodstuffs.



### 3 WA-VISON

This area features Japanese cuisine brought together by manufacturers of traditional ingredients such as miso, soy sauce, mirin (sweet rice wine), dashi (soup stock), and sake. There are also workshops and events where visitors can experience and learn about Japanese cuisine and craftsmanship.



### 4 San Sebastián St.

The town of Taki in Mie Prefecture, in which VISON is located, has joined with the city of San Sebastián in Spain to provide testimony to their friendship through fine food. San Sebastián St. has been named to commemorate this partnership. Visitors can enjoy shopping on this bustling street, which features the kind of Spanish-style bars that are popular in San Sebastián.



### 5 Atelier VISON

This area was produced by the ceramist and three-dimensional artist Koichi Uchida, and shares the culture of cookware. As locations for creating, informing, learning, and shopping, the museum and gallery are working to rejuvenate traditional industries.



### 6 kiond Wood Study Area

kiond is a sensory, experiential facility that conveys the fun of observing, sensing, studying, and enjoying real trees and forests, based on the theme of an enriching time nurtured by people and trees. It provides visitors with a new form of learning through tree-centered study.



### 7 Farm Area

Here a sustainable, organic farm covers a site of around 9000 m<sup>2</sup>. The site includes the farm restaurant nouniyei, where diners can sample a menu focusing on vegetables cultivated in the farm area and fresh ingredients grown in and around Mie Prefecture.

# VISON HOTELS

## HOTEL VISON

旅籠  
ヴィゾン  
HOTEL VISON



## ACCESS



An ideal base for sightseeing in Mie Prefecture, VISON is approx. 20 mins by car to Ise Grand Shrine and approx. 40 mins by car to Kumano Kodo. This privately run facility is directly connected to Japan's first officially authorized smart expressway interchange, Taki VISON SIC.

Address	<b>HOTEL VISON</b> Hotel VISON, VISON 672-1, Taki-cho, Taki-gun, Mie Prefecture <b>Hatago VISON</b> San Sebastián St. 5-banchi, VISON 672-1, Taki-cho, Taki-gun, Mie Prefecture
Access	<b>Train</b> Take the bus from Matsusaka Station on the JR Kisei Main Line/Kintetsu Railway Meisho Line and after approx. 45 mins, alight at VISON. <b>Bus</b> Take the bus from Taki Station on the JR Kisei Main Line and after approx. 30 mins, alight at VISON. <b>Car</b> Directly connected with Taki VISON SIC on the Ise Expressway (exit when traveling toward Ise only). Approx. 1 min from Seiwataki IC on the Kisei Expressway. Car parking provided.
Inquiries	Tel. 0398-39-3090 (10:00 a.m.-5:00 p.m.) info@vison-hotels.com



## HOTEL VISON

## HOTEL VISON

HOTEL VISON consists of six stand-alone villas where guests can enjoy complete privacy during their stay, and on the hillside, a ten-story hotel building with a total of 155 rooms. While enjoying this mountain resort, guests can look out over Taki's natural surroundings from every villa and from every guest room in the hotel. Inside the hotel are a restaurant, bar, health spa, clinic, and outdoor store.

## VILLAS

Set apart from each other, these villas are like individual vacation homes.

Rather than proclaiming their existence as buildings, through the use of cedar wood from Mie Prefecture painted in discreet black, these six villas blend in with the environment and, as individual units, provide guests with a completely private space. Each villa has been given a name evocative of the seasons, a large private garden, an open-air bath, a spacious veranda, and more. They have been designed to produce a modern Japanese feel and provide guests with a panoramic view of Taki's natural surroundings for the duration of their stay.

The interior plaster walls are white, while the wooden beams and floors are painted black to provide a chic design accent, and the wooden fixtures and fittings are stained white to give an overall feel reminiscent of the softness of Scandinavian furniture. Also, artworks by six Japanese artists—a calligrapher, illustrator, ceramist, metallic artist, woodcraft artist, and painter—are displayed in each of the six villas, so that guests can appreciate art at the same time as enjoying their stay.

Two Dog Villas are available to guests who wish to stay with their pet dogs. Each villa has its own parking space.

## VISON HOTELS are open at VISON one of the largest commercial facilities in Japan

VISON HOTELS are newly opened at one of the largest commercial facilities in Japan, VISON, which was created in Mie Prefecture in April 2021. Based on the idea that the human body and the environment are two fields of nature, these accommodation facilities provide a location that links mind and body with the natural environment, through the concept of enjoying and learning in the fields. HOTEL VISON comprises six stand-alone villas where guests can enjoy complete privacy during their stay, and a hotel building with a total of 155 rooms of five different types. Hatago VISON is a hotel with 40 rooms across four buildings, whose different designs are the embodiment of Japanese elegance.

Cuisine and culture are the pride of Japan, and the VISON commercial facility is home to both. On an extensive site whose total area is equivalent to that of 24 Tokyo Domes—that's over a million square meters—in addition to accommodation facilities, there are around 70 stores providing goods and services, including restaurants, a spa, a farmers' market, a Sweets Area, an organic farm, a Wood Study Area, and more. By staying at HOTEL VISON or Hatago VISON, visitors can enjoy a complete vacation experience within the facility.

VISON boasts outstanding access to Mie Prefecture's most famous tourist attraction, the Ise Grand Shrine, and to the World Heritage Site Kumano Kodo. A privately run facility, VISON is directly connected to Japan's first officially authorized smart expressway interchange, Taki VISON SIC (exit when traveling toward Ise only), so as an accommodation facility, it is a convenient base for sightseeing in Mie Prefecture and the Tokai region.

### Looking to the Future

Working on environmental protection and social contribution

#### Futons and pillows containing padding made with plastics collected from the oceans

The padding in our quilts and pillows is made with ocean-borne plastics by the German company ADVANSA. The raw materials are collected from seashores by needy members of the population in coastal nations, in collaboration with Plastic Bank. The padding in one quilt contains the plastic from 52.5 plastic bottles, while one pillow contains the plastic from 17.5 plastic bottles. In this way, we are contributing to a reduction in plastic garbage in the oceans.



Bedding

#### Organic cotton towels

We utilize towels made from organic cotton, which among other things leads to reduced water and soil pollution, combats poverty, and helps maintain the healthy lifestyles of agricultural workers.



Towels

#### Toiletries with a low environmental impact

By using raw materials that combine natural straw, the toiletries that we employ have less environmental impact, with around 40% less plastic used in their manufacture compared with conventional toiletries. They include toothbrushes, hairbrushes, razors, and cotton swabs.



Toiletries

### Guidance regarding measures against COVID-19

- Alcohol-based hand sanitizers are available at entrances and reception desks, and fixtures and fittings that come into contact with multiple visitors, such as elevator buttons and vending machines, are regularly disinfected.
- In the hotel lobbies, windows and entrances are opened to provide ventilation, and air purifiers are in operation.
- Thorough ventilation is undertaken when clearing guest rooms, and fixtures and fittings that come into contact with multiple visitors, such as light switches, doorknobs, and remote controls, are prioritized for disinfection. Air purifiers are also in operation in guest rooms.
- Members of staff are required to gargle and wash their hands thoroughly, use hand sanitizer, wear masks, check their body temperature each time they come to work, and complete health management questionnaires.
- As the time of their arrival, we also ask guests and visitors to check their body temperature, use hand sanitizer, and wear masks. There are also cases in which limits are imposed on the number of visitors to restaurants and bathing facilities, and on the amount of time they can enter those facilities.



Exterior view



Open-air bath



Spacious veranda



Guest room



Guest room



Dog Villa equipment



Dog Villa equipment

### Villa names and map



Map of villas (illustration)

### Guest room furnishings and amenities

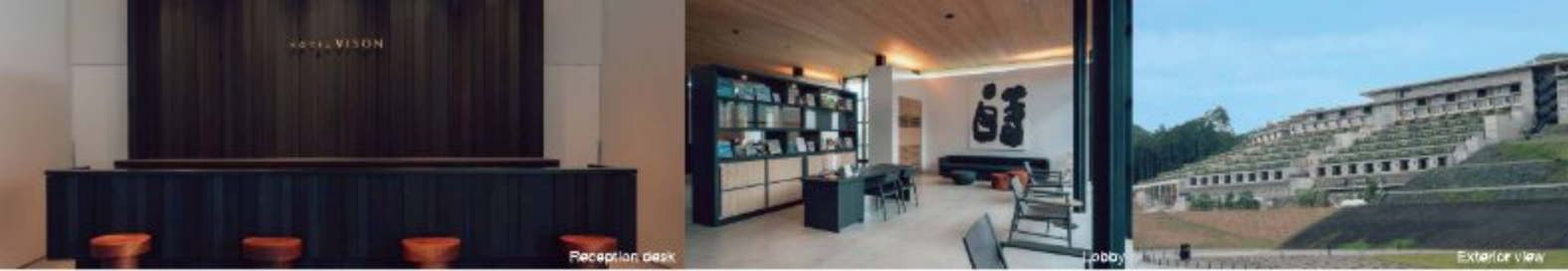
★ Dog Villas only

- Free Wi-Fi • Bedside power outlets • Beds • Air conditioning • Ice maker • Refrigerator
- LCD TV • Bath towels • Face towels • Bath mat • Loungewear • Hotel wear
- Bath robes • Slippers • Coat hangers • Hand soap • Body soap • Shampoo
- Conditioner • Toothbrushes/toothpaste • Cups • Hair brush • Razors
- Cotton swabs/hygiene set • Electric kettle • Hair dryer • Safe • Air purifier/humidifier
- Bidet toilet seat • Each villa has its own parking space

- ★ Cage • Pet toilet sheets • Dog bowl • Wet wipes • Carpet cleaner • Mains water

\*It is possible for two medium-sized dogs (up to 25 kg each) to stay with guests in each Dog Villa.

Villa types	Size	No. of guests	No. of rooms	Bed types	Bed sizes	Price per villa (incl. tax & service charge)
Villas	103.1-106.7 m <sup>2</sup>	2-4 people	4	2 beds & 2 futon sets	140-160 cm x 200 cm	From ¥66,800
Dog Villas	103.1-105.6 m <sup>2</sup>	2-4 people	2	2 beds & 2 futon sets	140-160 cm x 200 cm	From ¥66,400



**HOTEL BUILDING**

Guests can enjoy views of Taki's magnificent natural surroundings from all 155 rooms.

The hotel building stands on a hillside, enabling views of Taki's natural surroundings from all 155 of its guest rooms, of which there are five different types.

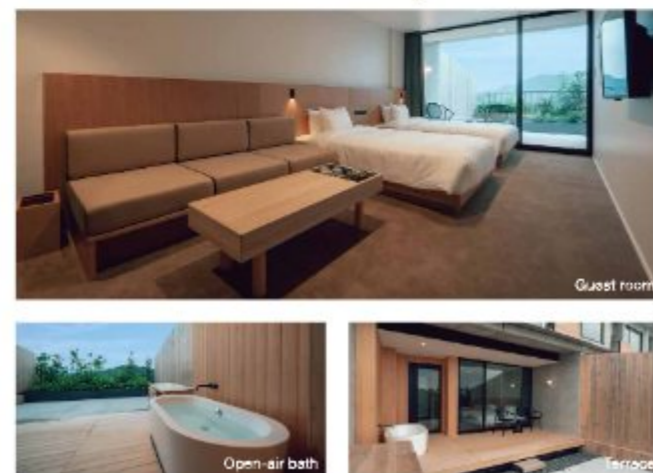
Many rooms have a terrace that is as spacious as the room itself, enabling guests to enjoy a mini-glamping experience. The town of Taki, in which VISON is located, has a friendly relationship with San Sebastián in the Basque Country of Spain, which is known as the world's number one city for gourmet cuisine. Because of this, and thanks to the cooperation of the Chillida Foundation, posters of works by Eduardo Chillida, a modern sculptor representative of San Sebastián, are on display in every room.

**SUITE WITH OPEN-AIR BATH** Suite with open-air bath



This 72 m<sup>2</sup> suite consists of a bedroom and living room. A unified space extending from the interior bathroom, via the restroom and to the external terrace, has been devised based on the concept of "water living," with an open-air bath on the terrace itself. The terrace commands a view of magnificent natural scenery.

**TERRACE TWIN WITH OPEN-AIR BATH** Terrace twin room with open-air bath



These guest rooms have a spacious terrace that is equivalent in size to the room itself and an open-air bath. The modern style of the rooms is designed with white as the keynote color. They are easy to use, with a separate bathroom, restroom, and washstand.

**TERRACE TWIN** Terrace twin room (dog terrace twin room)



These guest rooms have a spacious terrace that is equivalent in size to the room itself. The window in the semi-open-air bathroom can be opened to the elements. There are also rooms in which guests can stay with their pet dogs (dog terrace twin rooms).

**TWIN** Twin room



With two semi-double beds for a relaxing stay. These rooms are easy to use, with a separate bathroom, restroom, and washstand.

**DOUBLE** Double room



These rooms have a queen-size bed. They are easy to use, with a separate bathroom, restroom, and washstand.

Hotel/guest room furnishings and amenities

★ Dog terrace twin rooms only

Hotel	<ul style="list-style-type: none"> <li>Free Wi-Fi</li> <li>The hotel as a whole is non-smoking (smoking areas are available)</li> <li>Restaurant</li> <li>Laundromat</li> <li>Beverage vending machine</li> <li>Ice maker</li> <li>First-aid kits</li> <li>Rental umbrellas</li> <li>Rental wheelchairs</li> <li>Accessible guest rooms</li> <li>AEDs</li> <li>Car parking</li> </ul>
Guest rooms	<ul style="list-style-type: none"> <li>Free Wi-Fi</li> <li>Bedside power outlets</li> <li>Beds</li> <li>Air conditioning</li> <li>Refrigerator</li> <li>LCD TV</li> <li>Bath towels</li> <li>Face towels</li> <li>Bath mat</li> <li>Loungewear</li> <li>Hotel wear</li> <li>Bath robes (in suites with open-air baths only)</li> <li>Slippers</li> <li>Coat hangers</li> <li>Hand soap</li> <li>Body soap</li> <li>Shampoo</li> <li>Conditioner</li> <li>Toothbrushes/toothpaste</li> <li>Cups</li> <li>Hair brush</li> <li>Razors</li> <li>Cotton swabs/hygiene set</li> <li>Electric kettle</li> <li>Hair dryer</li> <li>Safe</li> <li>Air purifier/humidifier</li> <li>Bidet toilet seat</li> <li>★ Cage</li> <li>★ Pet toilet sheets</li> <li>★ Dog bowl</li> <li>★ Wet wipes</li> <li>★ Carpet cleaner</li> </ul>

Room types	Size	No. of guests	No. of rooms	Bed types	Bed sizes	Price per room (incl. tax & service charge)
Suite with open-air bath	72 m <sup>2</sup>	1-4 people	6	2 beds	140 cm x 200 cm	From ¥52,000
Terrace twin room with open-air bath	35 m <sup>2</sup>	1-3 people	20	2 beds & Sofa bed	120 cm x 200 cm	From ¥30,000
Terrace twin room (dog terrace twin room)	40 m <sup>2</sup>	1-3 people	91	2 beds & Sofa bed	120 cm x 200 cm	From ¥28,400
Twin room	40 m <sup>2</sup>	1-3 people	18	2 beds & Sofa bed	120 cm x 200 cm	From ¥28,400
Double room	35 m <sup>2</sup>	1-2 people	18	2 beds & Sofa bed	160 cm x 200 cm	From ¥27,600

\*Sofa beds in all room types are 85 cm x 185 cm. \*It is possible for two small dogs (up to 10 kg each) to stay with guests in each dog terrace twin room.

Guide to Facilities in HOTEL VISON

RESTAURANT/BAR

Restaurant IZURUN



IZURUN is on the tenth floor, the uppermost floor of the hotel, and is its main dining venue. This restaurant is a fusion of the wonderful artistry of San Sebastián—as evidenced in its cuisine and customs, and in Spain itself—and the rich variety of nature, ingredients, and craftsmanship in Japan.

Seating	34 customers
Opening hours	Breakfast 7:00 a.m.-10:30 a.m. Dinner 6:00 p.m.-10:00 p.m.

BAR LAGRIMA



Adjoining the restaurant is the main bar, BAR LAGRIMA, which has a plentiful lineup featuring standard cocktails, along with smoothie cocktails made from fresh fruit.

Seating	8 customers
Opening hours	6:00 p.m.-11:00 p.m.

HEALTH SPA/SHOP/CLINIC

TEUZUSIKI Wellness Sanctuary Spa

Produced by Saly Suzuki, a beauty artist in Mallorca, Spain. "Teuzusiki" means a beautiful place that sparkles like jewels in clear water. This health spa exudes creativity.

Opening hours	1:30 p.m.-10:00 p.m.
---------------	----------------------

Outdoor store Orange

Our store has an extensive range of outdoor gear, from essential items to independent brands. With a diverse lineup to satisfy everyone from beginners to outdoor veterans, we're waiting for your visit.

Opening hours	Summer (March-October) 11:00 a.m.-8:00 p.m. Winter (November-February) 11:00 a.m.-7:00 p.m.
---------------	------------------------------------------------------------------------------------------------

CLINIC VISON

Our clinic provides internal and preventive (regenerative) medicine. We provide cutting-edge medical treatment, including online treatment, preventive medicine utilizing smart devices, blood tests using the latest technology, and one of the leading forms of regenerative medicine in Japan, which utilizes human stem cell culture supernatant fluid.

Consultation hours	10:00 a.m.-1:00 p.m. & 2:30 p.m.-7:00 p.m.
--------------------	--------------------------------------------



Inside the VISON Commercial Facility

Guests staying at HOTEL VISON and Hatago VISON can use this facility free of charge.

HONZO SPA Bathing facility



Mie University and ROHTO Pharmaceutical Co., Ltd. have collaborated in developing the recipe for the herbal infusion Honzo Shichijuniko.

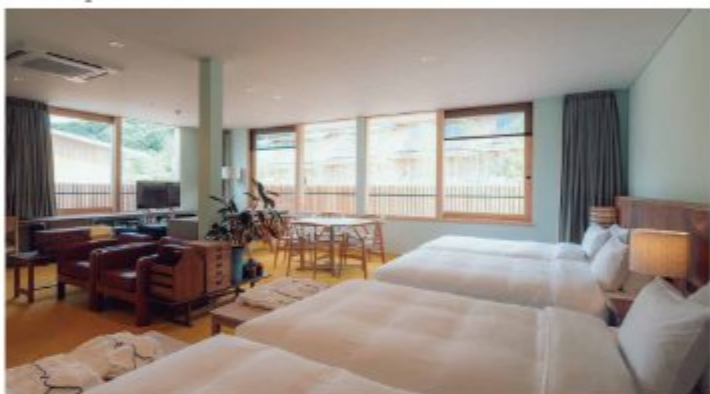
Opening hours	6:00 a.m.-12:00 a.m. (midnight)
---------------	---------------------------------

**Hatago VISON** Hatago VISON comprises four buildings with a total of 40 rooms. Every building is based on a different concept, and guests can enjoy the unique charm of each through the layout, furniture, fixtures and fittings. There are between six and ten twin rooms and one concept room in each building. The spacious concept rooms are around 70m<sup>2</sup> in size, with a different image from ordinary hotel rooms. Every guest room in every building is the embodiment of Japanese elegance and has large windows, enabling guests to enjoy the bustle of San Sebastián St. The four buildings of Hatago VISON are situated on San Sebastián St., a lively area where visitors can enjoy both cuisine and shopping. Hatago VISON is on the second floor of each building, with rows of restaurants and lifestyle-themed stores, such as bars, cafés, Japanese confectioneries, and so on, on the first floors.

## HATAGO 1 Interior selection D&DEPARTMENT PROJECT

**d** Presenting a space that is a cross between a hotel and a friend's house, and brings together much-loved long life design items both new and secondhand. From furniture to coffee cups there is a unity to each item, while they are all subtly different, and visitors can make new discoveries whenever they stay at VISON. Some of the interior goods can also be purchased at D&DEPARTMENT MIE.

### Concept room



### D&DEPARTMENT

The D&DEPARTMENT PROJECT is an active realization of store style with the theme of long life design, as founded in the year 2000 by designer Kenmei Nagaoka. While establishing a base in each of Japan's 47 prefectures, through product sales, cuisine, publishing, tourism, and so on—for example, the travel culture magazine with a design viewpoint d design travel and the product design museum d4r MUSEUM—Nagaoka is reexamining the individuality of the 47 prefectures along with enduring design that is unique to each, and acting to showcase these things nationwide.



### Twin room



## HATAGO 2 Interior coordination Kuruminoki

### くるみの木

Kuruminoki

Here we have created rooms that are easy on the eye and work in harmony with the beautiful nature visible from their windows, making them tranquil places to spend time. Sometimes you may wish to lie down and soothe your weariness, at other times you may wish to relax and enjoy the view while sipping on a cup of green tea... Guests can enjoy works created by artisans, not just in the rooms but in the lobby and corridors, and some of the furniture and fittings can also be purchased from the store on the first floor.

### Concept room



### Kuruminoki

Kuruminoki is a café and general store that began when Yukiko Ishimura came across a small building in the suburbs of Nara. It presents a space and lifestyle goods that enable us to treasure everyday life and to spend time in a way that is spiritually rich. Ishimura has also produced Shika no fune, a tourist information center in Nara City, and Machi no Schule 983 in Takamatsu City, and is helping to shape the dreams of businesses and municipalities.



### Twin room



### Hotel/guest room furnishings and amenities

Hotel	
	<ul style="list-style-type: none"> <li>Free Wi-Fi</li> <li>The hotel is non-smoking (smokers are asked to use smoking areas shared with the VISON commercial facility)</li> <li>Beverage vending machine</li> <li>Ice makers (in Hatago 1)</li> <li>Rental umbrellas</li> <li>Rental wheelchairs</li> <li>Accessible guest rooms</li> <li>AEDs</li> <li>Car parking</li> </ul>
Guest rooms	
	<ul style="list-style-type: none"> <li>Free Wi-Fi</li> <li>Bedside power outlets</li> <li>Beds</li> <li>Air conditioning</li> <li>Refrigerator</li> <li>LCD TV</li> <li>Bath towels</li> <li>Face towels</li> <li>Bath mat</li> <li>Loungewear</li> <li>Hotel wear</li> <li>Slippers</li> <li>Coat hangers</li> <li>Hand soap</li> <li>Body soap</li> <li>Shampoo</li> <li>Conditioner</li> <li>Toothbrushes/toothpaste</li> <li>Cups</li> <li>Hair brush</li> <li>Razors</li> <li>Cotton swabs/hygiene set</li> <li>Electric kettle</li> <li>Hair dryer</li> <li>Safe</li> <li>Air purifier/humidifier</li> <li>Bidet toilet seat</li> </ul> <p>All guest rooms have showers only and no bathtubs.</p>

## HATAGO 3 minä perhonen room by VISON direction

### minä perhonen

Presenting a tranquil, soothing space with a selection of products, cutlery, and furnishings from the minä perhonen brand, and from Scandinavian design with a high affinity for the interior. Guests can enjoy spending time in a space that incorporates minä perhonen textiles in its fabric boards, chairs, lighting, cups, trays, and more.

### minä perhonen

minä perhonen was established as a brand in 1995 by the designer Akira Minagawa. Its designs have advanced based on the spectacle of nature and the social gaze, and are characterized by textiles produced in collaboration with areas around Japan that are known for their fabric production. Starting with clothing and while diversifying into fields such as interiors, Minagawa is active in design to which consumers become increasingly attached to with the passing of time, and with which they feel a greater sense of intimacy day by day.

### Concept room



### Twin room



## HATAGO 4 Interior styling Landscape Products



While maintaining a modern, craft-like feel, these rooms have been planned based on the image of travelers' inns situated above the bars of San Sebastián. The color schemes are arranged based on earth colors and mosaic tiles seen while vacationing in Spain. Artists' textiles and furnishings have been chosen in keeping with the surrounding deep green California designs by Landscape Products. The room numbers employ a font borrowed from the Basque peoples of Europe.

### Landscape Products

Landscape Products was formed in 1997 with Shinichiro Nakahara as its central figure. With its roots in the modern design of the 1940s-1960s, Landscape Products began manufacturing and selling furniture, and opened Playmountain in Jingumae, Shibuya in the year 2000 (the store has since relocated to Sendagaya, Shibuya). The company was incorporated in the same year, and has since expanded into interior design for housing, offices, and stores, and into directly managed stores (interiors, general goods, clothing and accessories, cuisine, galleries). Right up to the present day, it has also enlarged the scope of its activities to include manufacturing and wholesale, production and direction of exhibitions and events, editing and publishing, and branding.

### Concept room



### Twin room



Room types	Size	No. of guests	No. of rooms	Bed types	Bed sizes	Price per room (incl. tax & service charge)
Hatago 1 Concept room	63.8 m <sup>2</sup>	1-4 people	1	4 beds	120 cm x 200 cm	From ¥58,200
Hatago 1 Twin room	28.6 m <sup>2</sup>	1-2 people	9	2 beds	120 cm x 200 cm	From ¥32,600
Hatago 2 Concept room	63.8 m <sup>2</sup>	1-2 people	1	2 beds	120 cm x 200 cm	From ¥58,200
Hatago 2 Twin room	28.6 m <sup>2</sup>	1-2 people	10	2 beds	120 cm x 200 cm	From ¥32,600
Hatago 3 Concept room	70.4 m <sup>2</sup>	1-4 people	1	4 beds	120 cm x 200 cm	From ¥58,200
Hatago 3 Twin room	28.6 m <sup>2</sup>	1-2 people	10	2 beds	120 cm x 200 cm	From ¥32,600
Hatago 4 Concept room	70.4 m <sup>2</sup>	1-3 people	1	3 beds	120 cm x 200 cm (2 beds) 140 cm x 200 cm (1 bed)	From ¥58,200
Hatago 4 Twin room	28.6 m <sup>2</sup>	1-2 people	6	2 beds	120 cm x 200 cm	From ¥32,600